

## WATER QUALITY TESTING: DISSOLVED OXYGEN

### Grades 6-8 Hyatt Lake

Use this information sheet to help you learn more about **dissolved oxygen (DO)**! The units for dissolved oxygen are parts per million (PPM).

- Measures how much oxygen is dissolved in the water and available to living aquatic organisms (so fish can breathe).
- Fast moving water contains a lot of DO, but still water contains less.
- DO doesn't impact human health, but it can impact how water tastes and smell.

#### Oxygen gets dissolved in water by...

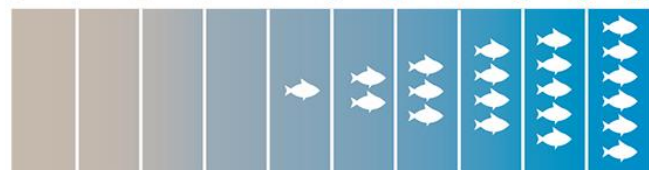
- Rapids, wind, or rain
- Anything that breaks the surface of water
  - Example: osprey jumping into the water to grab a fish



### RANGE OF TOLERANCE FOR DISSOLVED OXYGEN IN FISH

#### PARTS PER MILLION (PPM) DISSOLVED OXYGEN

0 1 2 3 4 5 6 7 8 9 10



< 3.0 PPM  
too low for  
fish populations

3.0 - 5.0 PPM  
12-24 hour  
range of tolerance /  
stressful conditions

6.0 PPM  
supports  
spawning

> 7.0 PPM  
supports  
growth/activity

> 9.0 PPM  
supports  
abundant  
fish populations

**Drinking Water Standard:**  
unspecified

- Higher DO tastes better.

**Ideal for Freshwater Aquatic Life:**  
greater than 5 ppm

- DO levels below 5 ppm stress aquatic life